

**ehB**  
RESIDENTIAL

Your Property - Our Business

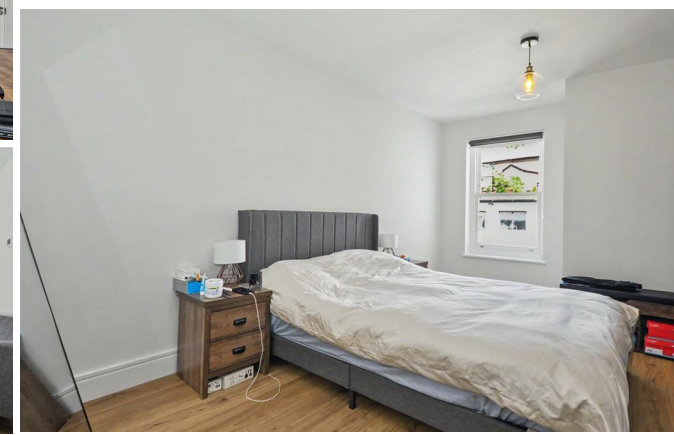


**Apt 5, 16 Cross Street, Leamington Spa**

**£1,700 Per Month**



A stunning and modern furnished two bedroom first floor apartment, located within a few minutes walk of the town centre.



Your Property - Our Business

- Residential Estate Agents
- Lettings and Property Managers
- Land and New Homes Agents

Leamington Spa Office  
Somerset House  
Clarendon Place  
Royal Leamington Spa  
CV32 5QN

01926 881144 [ehbresidential.com](http://ehbresidential.com)

Energy Efficiency Rating		Current	Potential
Very energy efficient - lower running costs			
(92 plus) A			
(81-91) B		87	87
(69-80) C			
(55-68) D			
(39-54) E			
(21-38) F			
(1-20) G			
Not energy efficient - higher running costs			
England & Wales		EU Directive 2002/91/EC	

Also at: Warwick, 17-19 Jury St, Warwick CV34 4EL